

Soul Studio



ABOUT US

Welcome to *Soul Studio* — a hidden gem in the heart of Primrose Hill. More than just a yoga and wellbeing event space, we're a home for connection, creativity, and community.

Tucked away in a quiet cul-de-sac with a private entrance, our 3,685 sq ft (342.4 sq m) studio features two flexible spaces for classes, events, and shoots. We offer full support, including equipment hire, catering, and drinks from our sister company, Roots on Regent's Park Road.

Founded in 2018 by Jodie Perry, Soul Studio is part of a wellbeing family alongside Soulstice London and Roots Café.

Soul Studio





Main Barn

1,973 sq ft

18.68m x 9.81m



Main Barn



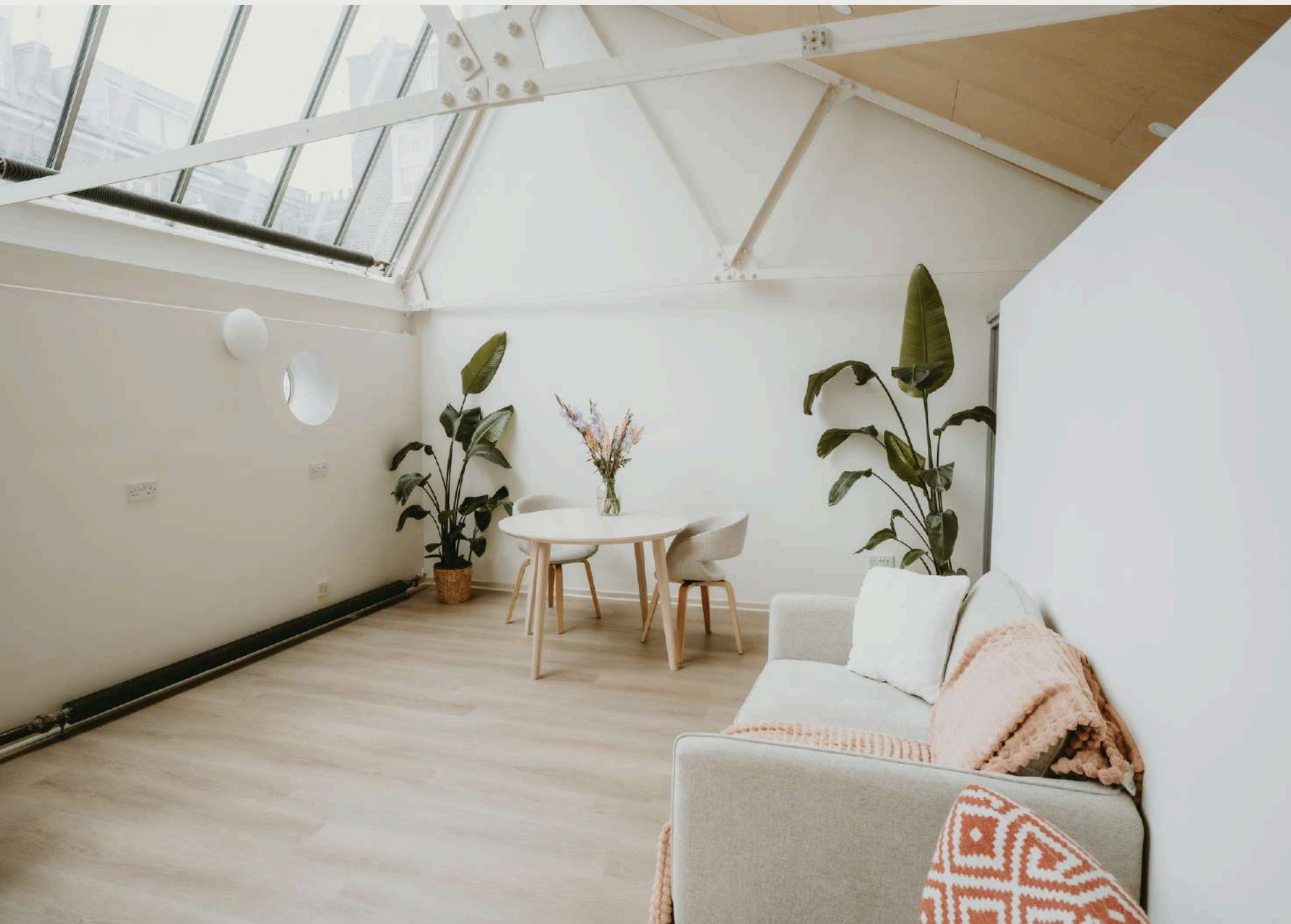
Main Barn



Sky Studio
293 sq ft
6.35 m x 4.29 m



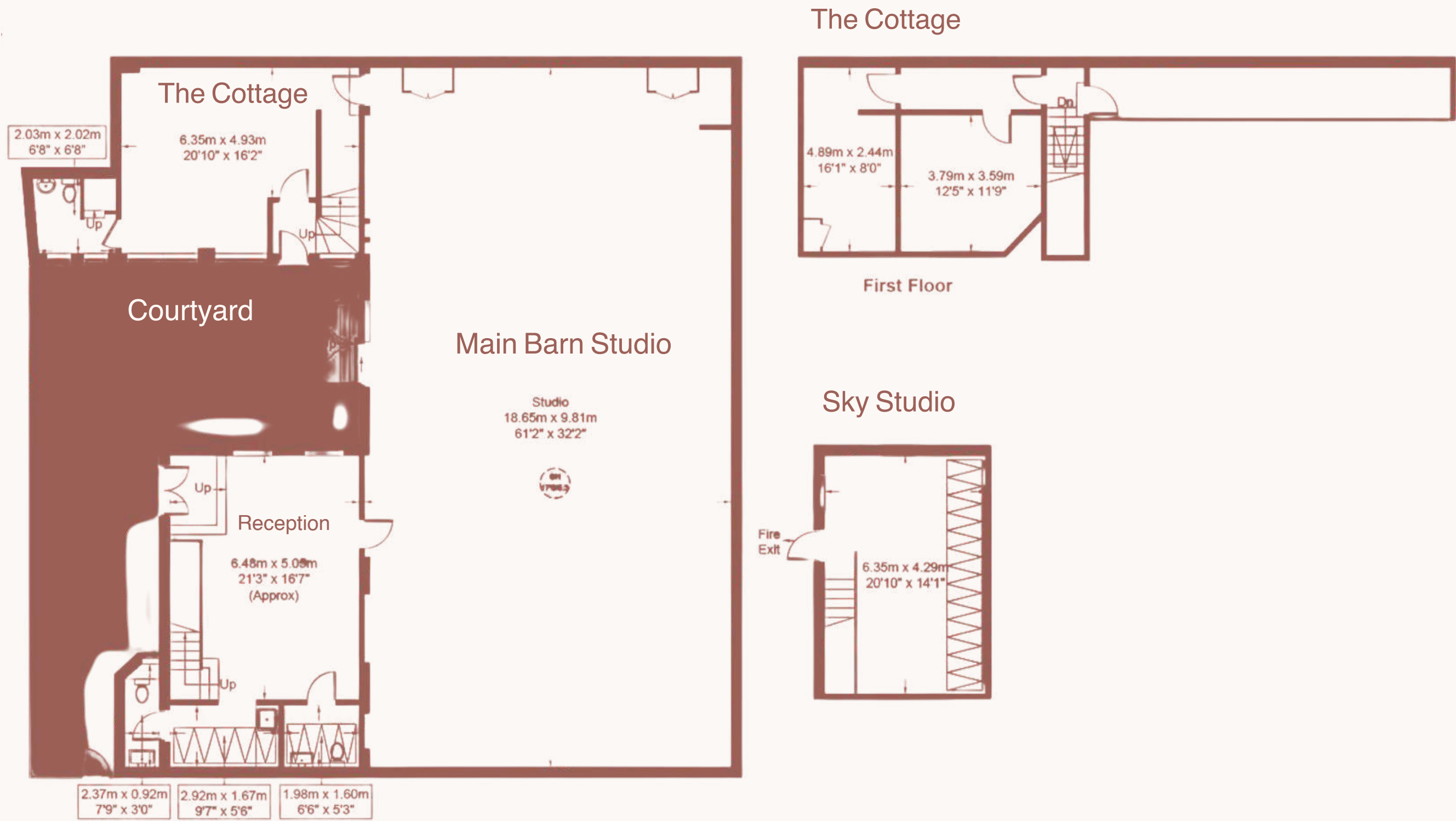
Sky Studio



Sky Studio



FLOOR PLAN



Soul Studio

WHY PRIMROSE HILL?

Nestled in one of London's most iconic and sought-after neighbourhoods, Primrose Hill offers the perfect blend of tranquility, prestige, and creative energy, making it an exceptional location for events.

Known for its vibrant community of artists, wellness enthusiasts and thought leaders, the area naturally attracts those seeking meaningful and immersive experiences. Just moments from central London, Primrose Hill feels like a retreat while remaining well-connected - offering the perfect balance of convenience and exclusivity.

Whether you're hosting a wellness retreat, brand activation, workshop, or intimate gathering, Soul Studio provides an elegant and inspiring environment that ensures a memorable experience.

Soul Studio





Event Hire

Host your event in a beautifully curated space, perfect for gatherings of 60–150 guests.

Our thoughtfully designed studio provides the perfect setting for memorable and impactful events.

Please enquire to issy@soulstudio.com for a tailored route



Soul Studio

PREVIOUS BRAND EVENTS & PARTNERSHIPS

alo **JUNO** **PRESS**
BAMBOO WATER

DIRTEA **Breathpod**

DAMSON

MADDER.

Soul Studio

